



Kirby Lake Park Master Plan

Area functions with rising and falling of water levels. Some trails, notably the tertiary trails, are not trails mark on the ground necessarily unless above the high water level mark as determined by the lake spillway. Note that the highwater mark may be altered with future dam and spillway modifications.



vista

E. Mitchell Wright ASLA, AICP, LEED AP
Vista Planning & Design
mitch@vistaplanningdesign.com
(512) 673-8274



Master Planning Process:

- Workforce Solutions Funding
- WFS Visioning & Design Workshop
- WFS Master Plan & First Phase
- WFS First Phase Construction Docs
- Public Engagement in 3 Stages
- Draft Master Plan
- Draft Report

Children's Intelligent Nature Play

Stimulating Curiosity,

Activating Motor Skills,

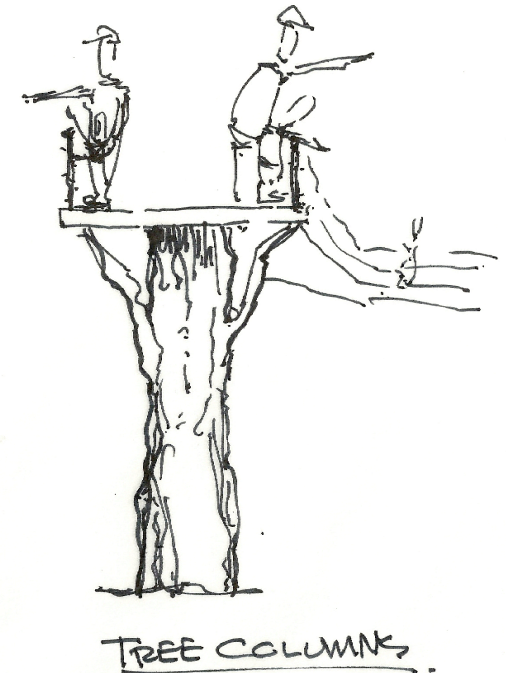
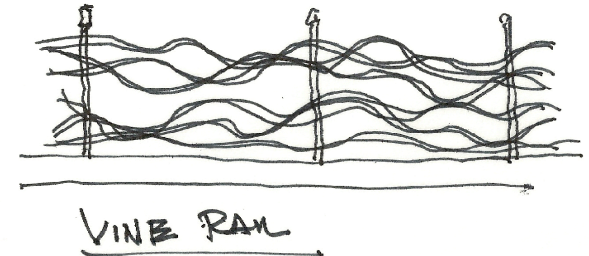
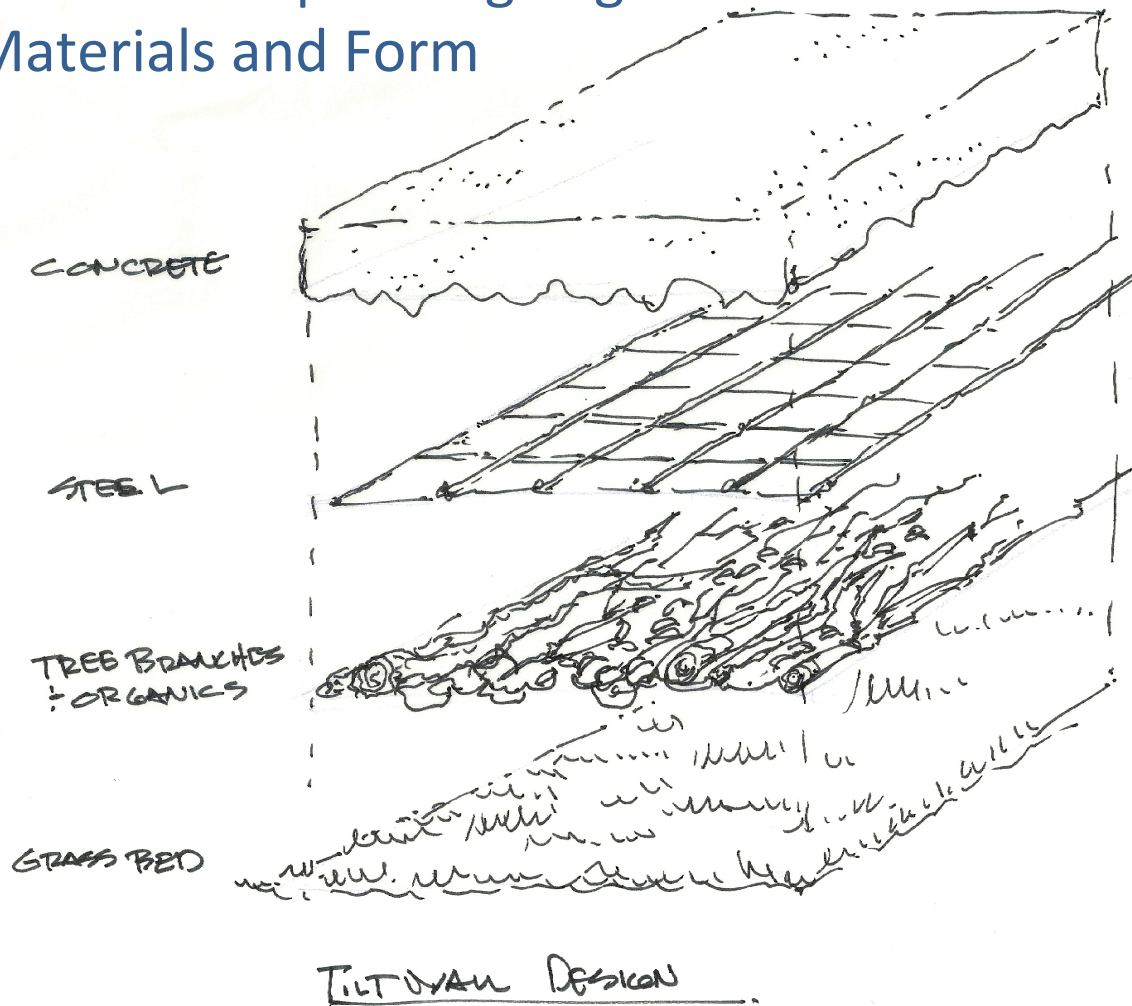
& Growing Intelligence



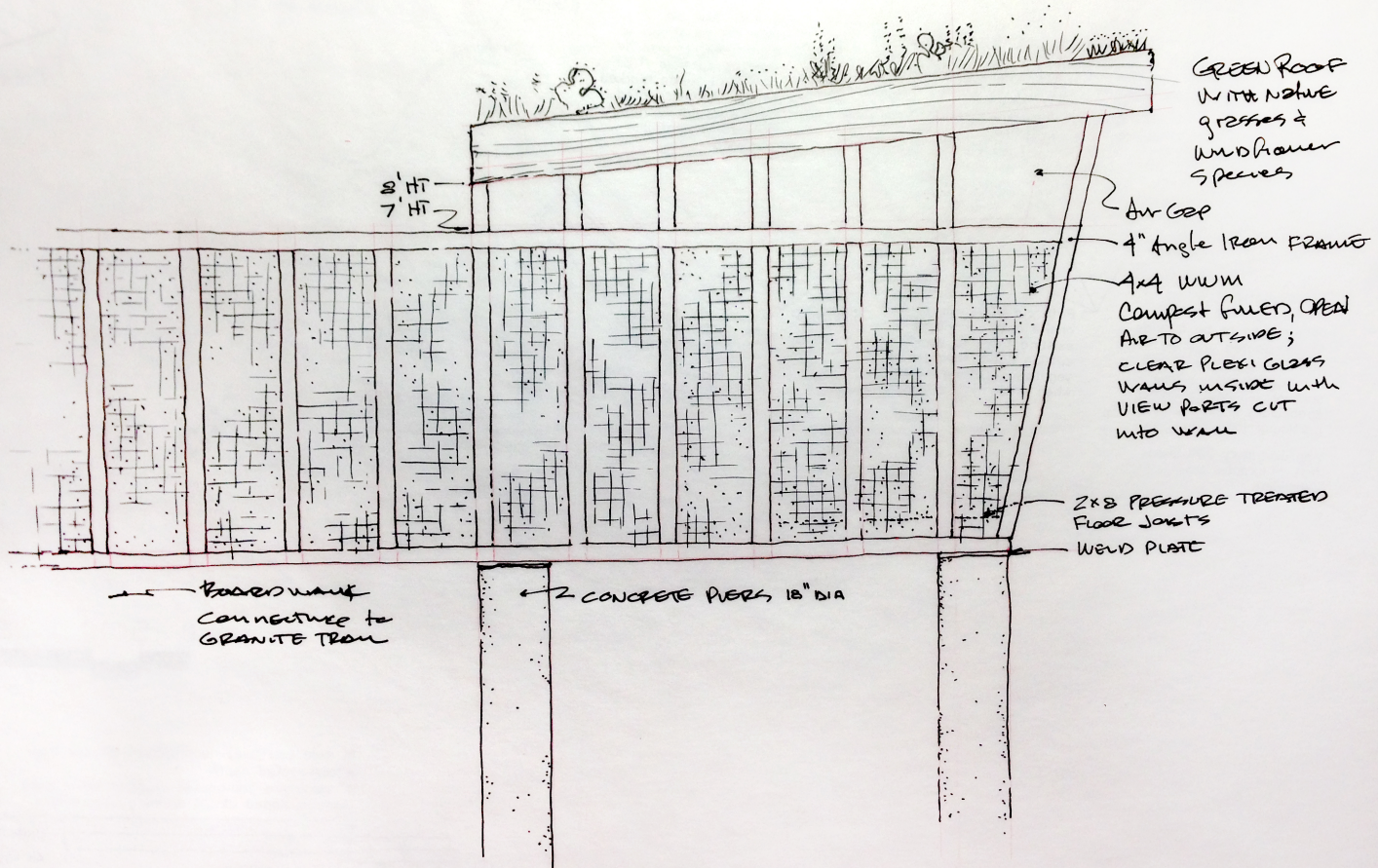


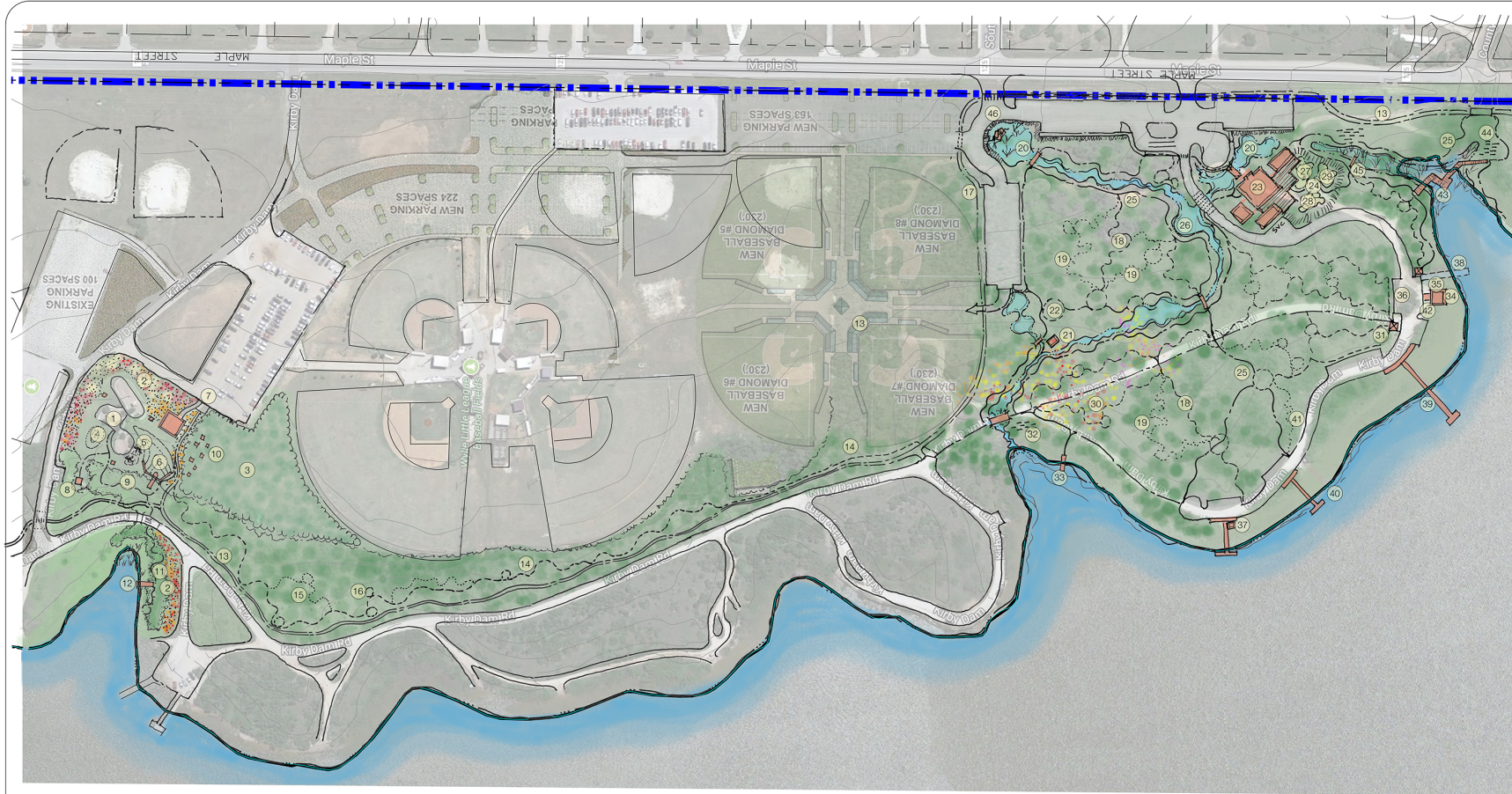
Stimulating Details

Details Incorporating Organic Materials and Form



Details Incorporating Organic Materials and Form





Sheet Key To Locations & Activities

North Playscape Site

- ① Existing Playscape
- ② Wildflower Meadow
- ③ Arboretum Forest of Natives
- ④ Grassy Hill
- ⑤ Sand Pit With Climbing Logs
- ⑥ Grassy Hill with Overlook in Canopy
- ⑦ Hike & Bike Trail Head
- ⑧ Existing Restrooms To Be Renovated
- ⑨ Path through Woods 0-5 yrs
- ⑩ Picnic Tables
- ⑪ Path to Lake Edge
- ⑫ Bird Blind

Mid Site Connector

- ⑬ Hike and Bike Trail; Regional Connector
- ⑭ Secondary Trail; 8' Mulch
- ⑮ Tertiary Trail; 3'-5' Rough Trail
- ⑯ Discovery Node; Typical

South Primary Site

- ⑰ Hike & Bike Trail
- ⑱ Secondary Trail; Mulch
- ⑲ Tertiary Trail; 3'-5' Rough Trail
- ⑳ Riparian Habitat; Bio Retention Filtration
- ㉑ Shelter with Education & Boardwalk
- ㉒ Discovery Node; Typical

South Primary Site; Continued

- ㉓ Science & Education Center
- ㉔ Safe Zone & Barrier; 0-7 yrs
- ㉕ Primary Trails; ADA Accessible
- ㉖ Water Play
- ㉗ Bone Discovery
- ㉘ Loose Parts
- ㉙ Log Rumble
- ㉚ Wildflower Meadow
- ㉛ Simple Shelter with Education
- ㉜ Bat Colony Houses
- ㉝ Bird Blind
- ㉞ Fish Camp

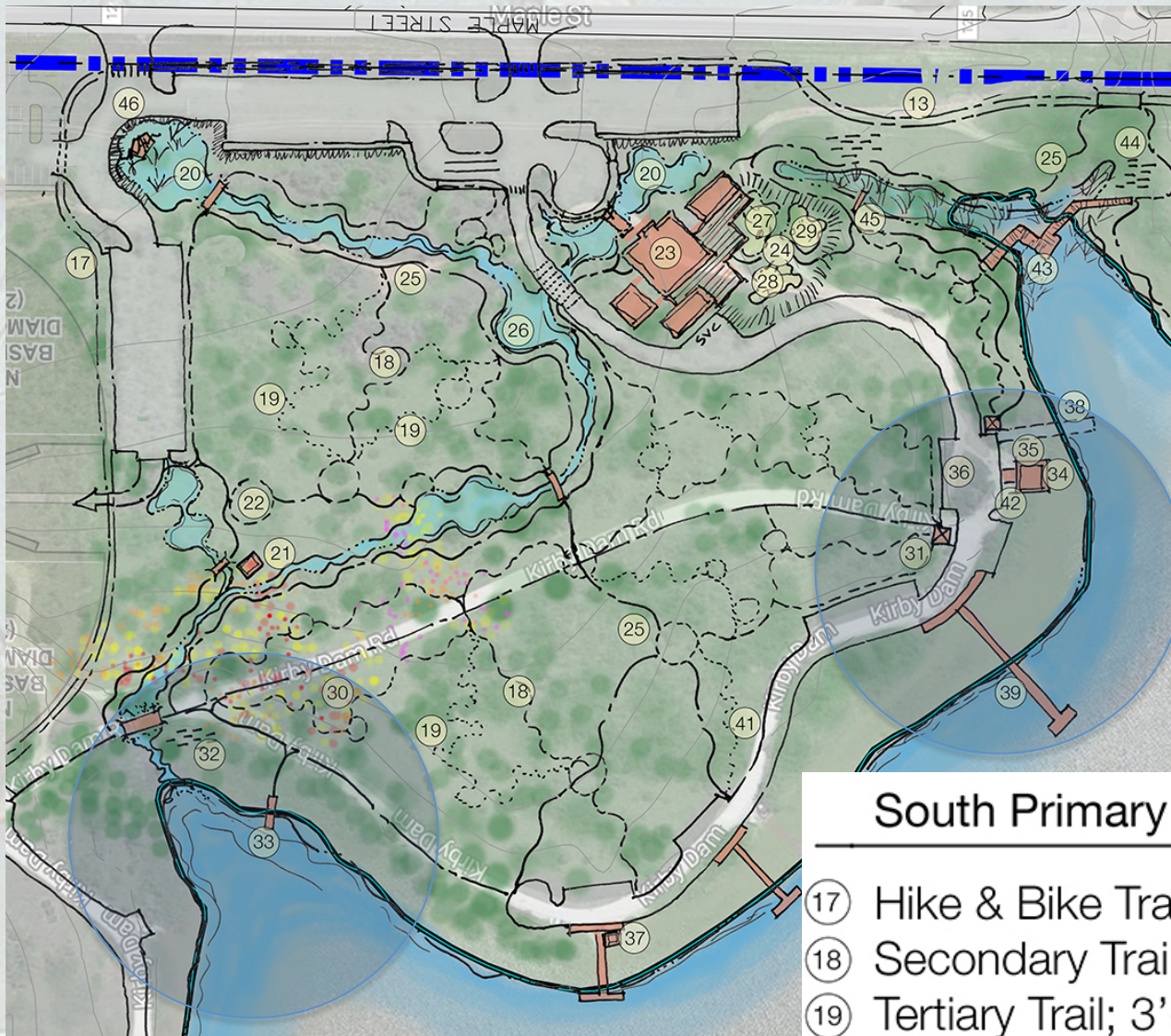
South Primary Site; Continued

- ㉟ Fish Cleaning & Education
- ㊱ Parking
- ㊲ Simple Shelter with Education
- ㊳ Kayak & Canoe Launch
- ㊴ Fishing Pier
- ㊵ Fishing Dock
- ㊶ Paved Drive
- ㊷ Restrooms
- ㊸ Lake Cove Habitat Boardwalk
- ㊹ Bat Colony Houses
- ㊺ Bird Blind
- ㊻ Entry Monument to Sports & Nature Ctr.

Legend

- Regional Hike & Bike Trail
- Primary Trail; ADA
- Secondary Trail; Mulch
- Tertiary Trail; Rough
- Gathering Place
- Point of Interest
- Safety Barrier
- Water Crossing
- Marshy
- Boardwalk
- Tree Log Rumble
- Bat Colony
- Wildflower Meadow





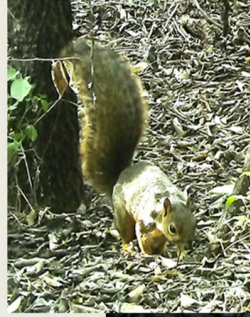
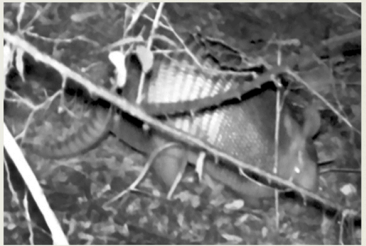
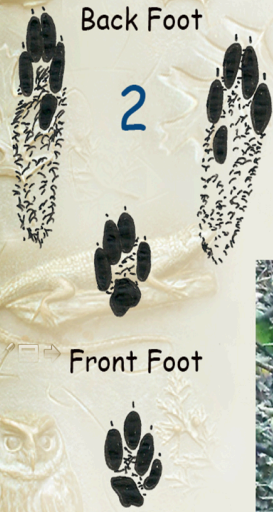
South Primary Site

- ①⑦ Hike & Bike Trail
- ①⑧ Secondary Trail; Mulch
- ①⑨ Tertiary Trail; 3'-5' Rough Trail
- ②⑩ Riparian Habitat; Bio Retention Filtration
- ②① Shelter with Education & Boardwalk
- ②② Discovery Node; Typical

Children's Nature Play



These Animals Live Right Here, The Photos Were Taken Right Here!



- 1 Whitetail Deer
- 2 Eastern Cottontail Rabbit
- 3 Opossum
- 4 Gray Fox
- 5 Eastern Fox Squirrel
- 6 Armadillo
- 7 Raccoon

Can You Match The Foot Print
With The Animal?



See: Shape, Color,
Differences,
Habitats, Flight

Hear: Their Sounds of
Communication

Common Birds Around Lake Kirby

1 Ladder-backed Woodpecker
Resident Year Round

2 Scissor-tailed Flycatcher
Summer Resident

3 Ring-billed Gull
Winter Resident

4 Red-winged Blackbird
Resident Year Round

5 Killdeer
Resident Year Round

6 American White Pelican
Winter Resident

7 American Coot
Resident Year Round

8 Great Blue Heron
Resident Year Round

9 Northern Shoveler
Winter Resident

10 Pied-billed Grebe
Resident Year Round

11 Spotted Sandpiper
Winter Resident

12 White Crowned Sparrow
Summer Resident

Beginning

Flourishing

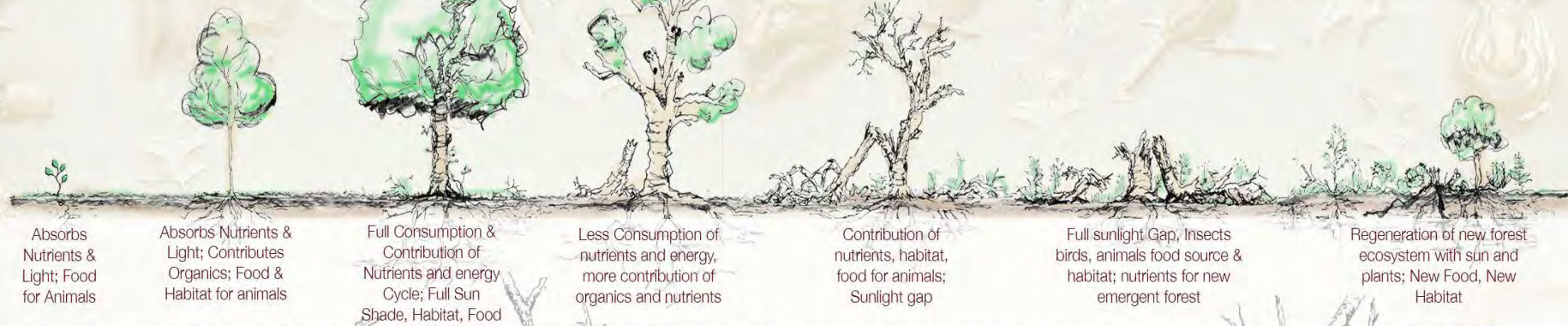
Maturing

Declining

Dying

Decomposition

New Life



Top Carnivores

Tertiary Consumer

Carnivores Omnivores

Secondary Consumer

Herbivores

Primary Consumer

Photosynthesis

Primary Producer

Soils

Decomposer



There are more organisms in one tablespoon of healthy soil than there are people on Earth



Public Engagement

Post Card Survey

Stakeholder Meetings: 30 Different Organizations

October 17, 2017		
Public Engagement: Stakeholder Meeting List by Groupings		
Group 1 4 th 11:00am	<ul style="list-style-type: none"> City: Community Services Public Works Water Department First Responders: EMS, Fire, Police Capital Projects/CIP 	City to Contact
Group 2 4 th 2:00pm	<ul style="list-style-type: none"> Workforce Solutions of West Central Texas Friends of Kirby Lake Big Country Audubon Society West Texas Science Center 	Vista to Contact
Group 3 5 th 9:00am	<ul style="list-style-type: none"> TPWD Fishing Boy Scouts 	City to Contact
Group 4 5 th 11:00am	<ul style="list-style-type: none"> Abilene ISD Wylie ISD 	Vista & City
Group 5 5 th 2:00 pm	<ul style="list-style-type: none"> Planning Dept. P&Z (Past Member) Keep Abilene Beautiful Abilene MPO American Institute of Parliamentarians Chamber Abilene Young Professionals Girl Scouts 	Vista to Contact
Group 6 6 th 9:00am	<ul style="list-style-type: none"> Big Country Trail Runners Keep Abilene Beautiful Wylie Fast Pitch Wylie Fast Pitch Softball Wylie Little League Baseball Bike Town and cycling clubs Abilene Clay Sports Abilene Public Works 	City to Contact

Format of the meetings:

- Attendees will consist of one or two representatives of each organization.
- Try to limit attendees to 10 people excluding Vista.
- Vista will present a brief overview to include the WFS phase and showing maps
- Vista will have all maps on hand
- Discussion will start with going around room with introductions and brief statement of interests or involvement in Kirby Lake.
- Free form discussion thereafter with a few guided questions from Vista.
- All meetings will be digitally recorded for subsequent minutes of the meeting

Kirby Lake Fishermen Poll

What are your favorite TWO things about Kirby Lake? EASY TO GET TO, KIRBY HAS LARGE FISH

What TWO things do you NOT like about Kirby Lake? ROUGH BEADS, SMALL AREAS THAT YOU CAN FISH

What enhancements would improve your fishing? ADD AREAS TO THE WHOLE HAVE ACCESS TO THE WHOLE

How would you rank the priority of the following aspects of fishing? (1 is highest priority, 5 is lower priority)

1. Nature Experience 2. Fishing facilities 3. Paved access 4. Hiking/biking trails 5. Restrooms 6. Trash removal

Additional comments or needed facilities: LAKE PATROL AT NIGHT

Kirby Lake Patron's Poll

What are your favorite TWO things about Kirby Lake? THE CITY'S EASY FISHING SPOTS

What TWO things do you NOT like about Kirby Lake? TRASH LEFT ALL OVER THE BOAT DOCK GETS VANDALIZED/POOR CONDITION

What enhancements would improve your visits to the park? TRASH LEFT ALL OVER THE BOAT DOCK GETS VANDALIZED/POOR CONDITION

How would you rank the priority of the following aspects? (1 is highest priority, 5 is lower priority)

1. Nature Experience 2. Fishing facilities 3. Paved access 4. Hiking/biking trails 5. Restrooms 6. Trash removal

Additional comments or needed facilities: PLUMBING WOULD BE NICE, NEW BOAT DOCK

Kirby Lake Patron's Poll

What are your favorite TWO things about Kirby Lake? BEACH PORTAL AT ABILENE CLAY SPORTS / SOMEONE CAME AT ABILENE CLAY SPORTS

What TWO things do you NOT like about Kirby Lake? THE TRASH AT THE SOUTH / NORTH AREAS, ILLEGAL DUMPING

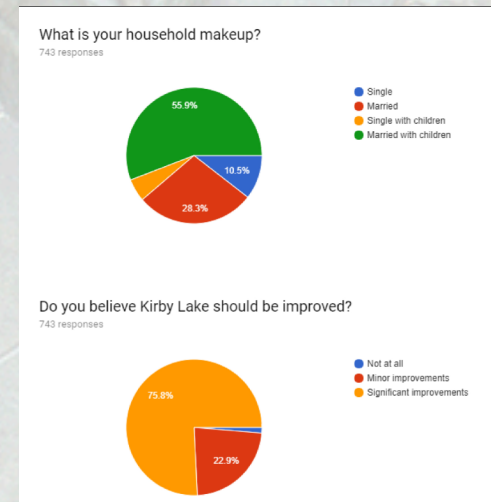
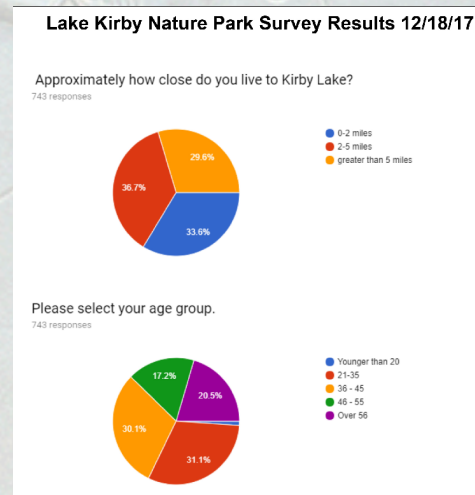
What enhancements would improve your visits to the park? PUTTING BACK FISHING AREAS, TRASH REMOVAL

How would you rank the priority of the following aspects? (1 is highest priority, 5 is lower priority)

1. Nature Experience 2. Fishing facilities 3. Paved access 4. Hiking/biking trails 5. Restrooms 6. Trash removal

Additional comments or needed facilities: THE AREA NEEDS MORE ACCESS AND A PROTECT TRAILER OVER THEM DURING WIND

Online Survey



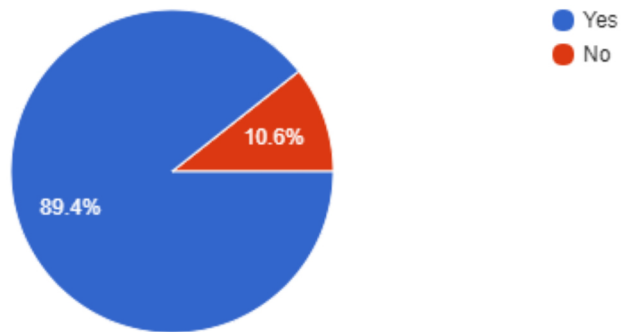
Please select the activities you would like to see added or enhanced?

<u>Top 7</u>	<u>Votes</u>	<u>Percent</u>
Hiking/Biking	548	73.8
Fishing	469	63.1
Nature Play(scape) areas	395	53.2
Camping	352	47.4
Boating	300	40.4
Bird/Nature Watching	278	37.4
Nature Education	264	35.5

Please note: This question has the option to add an "Other" response. Those responses are not reflected in this report.

As a citizen would you support tax dollars being used to fund these improvements?

743 responses





What Are The Goals?

For Design:

- Address Community Wide Needs
- Respect Existing LEGAL Uses
- Provide Better Security/EMS
- Integrated Into Natural Settings
- Multiple Space Options
- Divisions According to Age Groups
- Physical, Mental, Sensory Activities
- Reasonable Costs/Long Term



Top Amenities:

A background collage of various nature-themed items including birds (cardinal, sparrow), a mouse, a deer head, an owl, an armadillo, a lizard, and a raccoon, all rendered in a light, textured style.

What Are The Goals?

For Implementation:

Approval Process

First Phase Construction Starting

Raise Community Awareness

TPWD, LWCF Grant Funding

Other Funding Sources

Build Partnerships & Volunteerism

Development in Phases Over Time



- 1 Children's intelligent play; playscape enhancements to stimulate natural play immersion and education.
- 2 Boat dock and ramp restoration and upgrades to include fish cleaning and potable water.
- 3 Arboretum and picnic area including sensory garden to provide therapy and nature education.
- 4 Enhanced fishing experience with small stone terraces, some with ADA access and other features.
- 5 Trails of various grades for hiking and biking.

- 6 Constructed beach area; stone barricade impounding sand fill, to be developed with water quality features.
- 7 Constructed streams for water cleaning for interacting and walking trails.
- 8 Nature & Science Center for education, interpretation, and exhibits.
- 9 Hike and bike trail, walking trails, bat houses, observation stations, and oil field remediation site.
- 10 Trail linkages around the lake including regional links.
- 11 Parking, trail head, trash receptacle

- 12 Hiking trails, primitive camping with fire pits, nature observation stations.
- 13 Nature immersion kayaking zone.
- 14 Parking lot with Kayak launch, trail head, bat houses, nature observation.
- 15 Primitive camping with fire pits, other gathering places, trails.
- 16 Primitive camping with fire pits, trails and small gathering places and clearings for nature observation.
- 17 Abilene Clay Sports
- 18 Buffer zone for safety
- 19 Parking lot and trail head

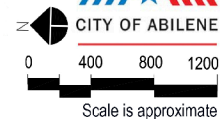
- 20 Parking along levy road for fishing and hike and bike trail access.
- 21 Levy road cul de sac large enough for trucks with trailers. Parking along sides, and stone steps to access fishing on NW corner of the lake.
- 22 Hike and bike trail on dam and north lowlands, smaller hiking trails, bird blind for nature observation.
- 23 Clear field for events and open play.
- 24 Parking
- 25 Picnic grounds with granite trails and sites. Stand-up grills, tables, native vegetation left in place with minimal clearing.

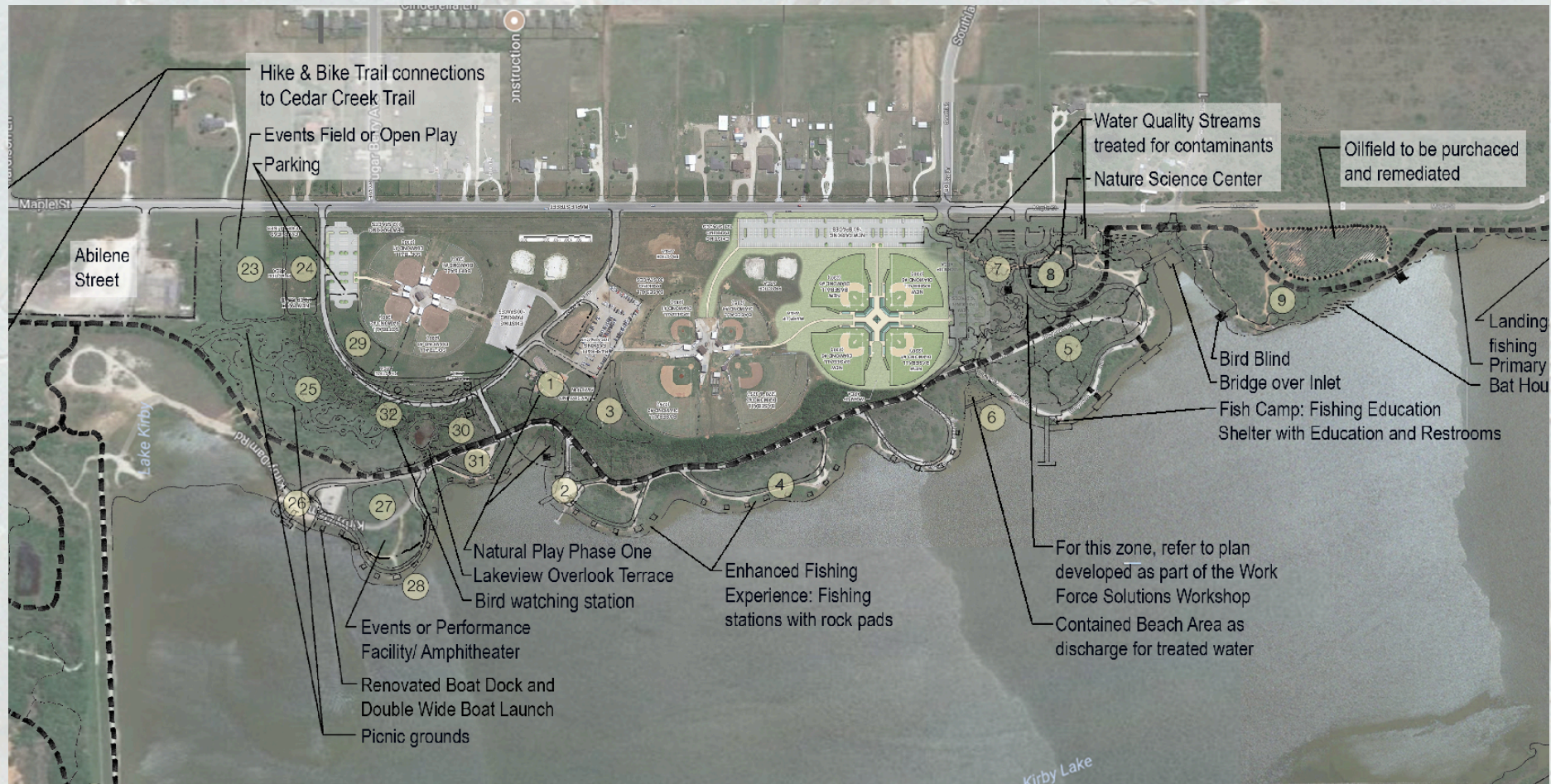
- 26 Renovated parking lot and dock. Boat launch expanded for double loading. Ample trash receptacles.
- 27 Small event space for performances.
- 28 Maintain fishing edge below event space including access.
- 29 Parking on outside ring of ball park.
- 30 Open area in trees for picnics including two pavilions.
- 31 Fishing edge with enhancements including stone terrace with stone blocks for table or seat.
- 32 Constructed bird watching station near champion mesquite tree.

Symbols Legend

- Regional Hike and Bike Trail, ADA
- Primary Trail, ADA
- Secondary Trail
- Tertiary Trail
- High Water Line
- Safety Zone Boundary
- Parking
- Oil Field Remediation Zone
- Gun Club Lease Boundary
- Nature Science Center
- Various Use Boundaries
- Bat Houses
- Clearings for gathering places

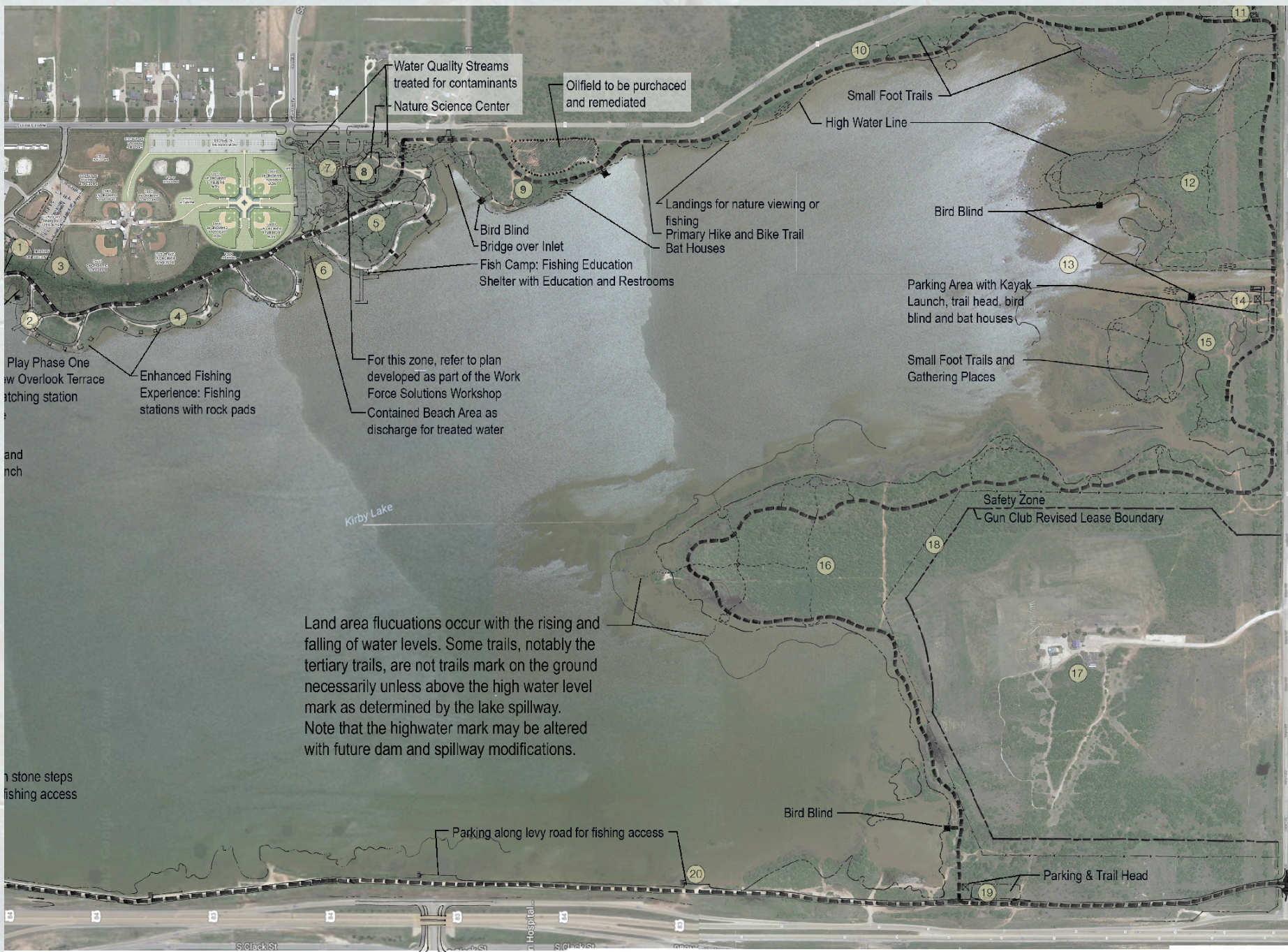
- Bird Blinds
- Trail Heads
- Pavilions
- Picnic Spaces
- Fishing Stations
- Trash Receptacles

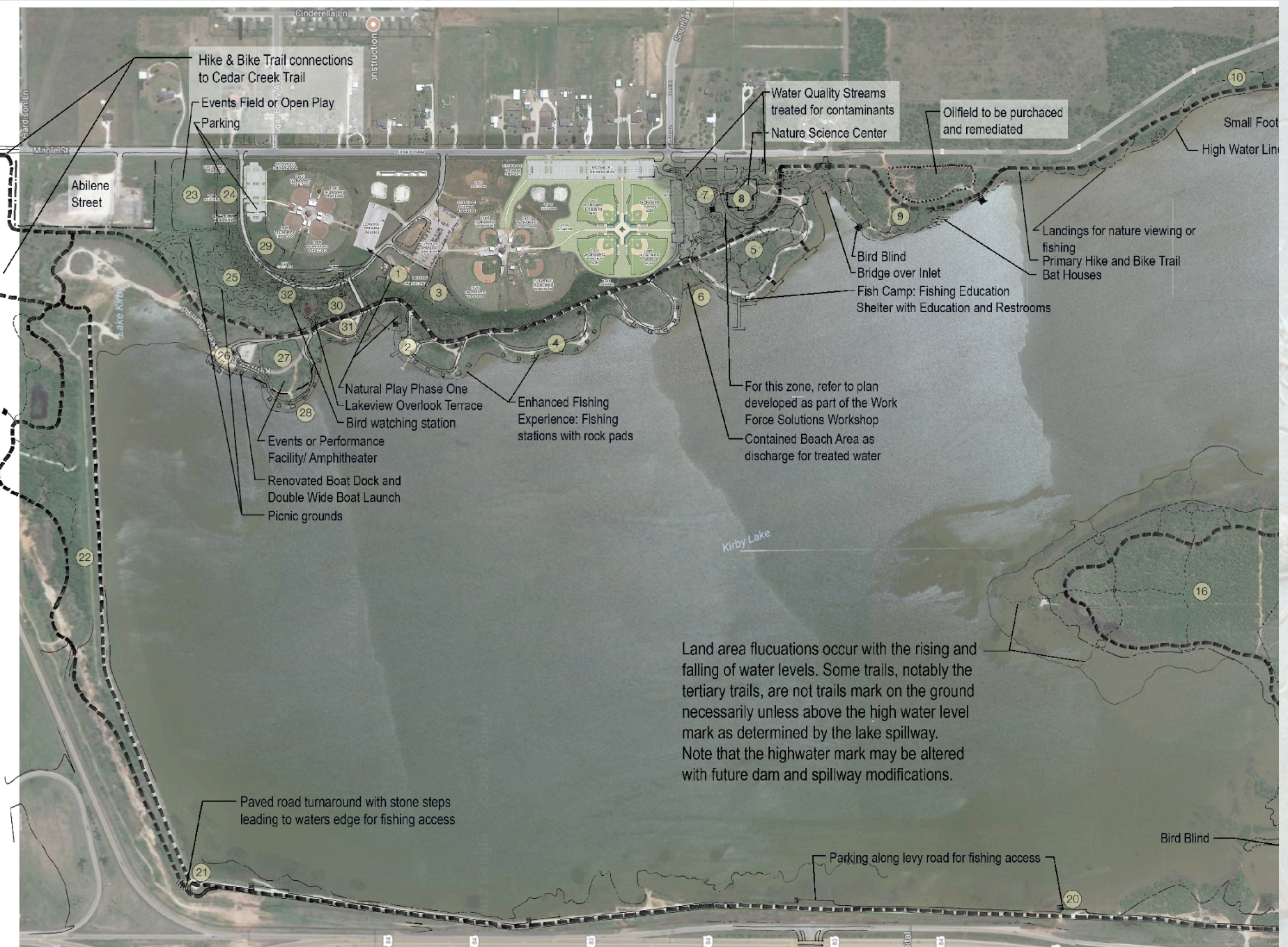




Fishing
Nature Play & Education
Picnic
Entertainment venue
Water Cleansing & Education

Sandy Beach Swimming
Nature Viewing
Nature Science Center
Parking
Cycling and Trails





Lets make Kirby Lake Master Plan accommodating to all sorts of activities without conflicts!



Other Potential Uses:

- BMX Biking
- Equestrian
- Model Craft

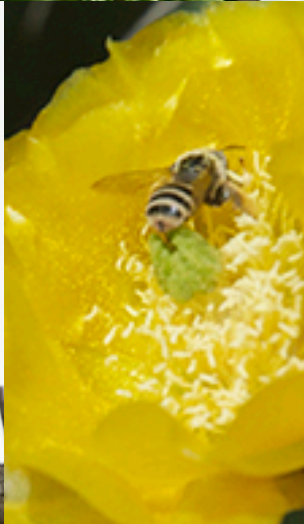
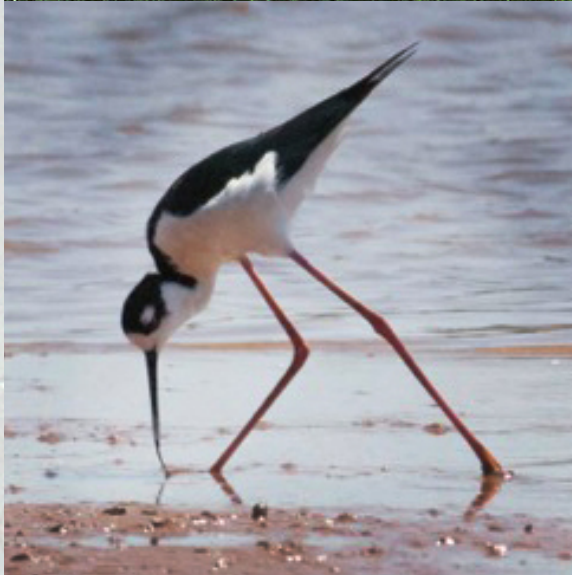
Lets make Kirby Lake Master Plan an ecological paradise and destination!







Small, Medium, and Large,
Natural Beauty













Vista

Vista Planning & Design E. Mitchell Wright, ASLA, AICP LEED AP
mitch@vistaplanningdesign.com (512) 673-8274



